

JAMES D. JULIA Inc.

Welcome to James D. Julia Auctioneers
One of the nation's leading auctioneers in the trade for approximately 40 years

Auctioneer & Appraisers
 203 Skowhegan Rd
 Fairfield, Maine 04937
 Tel: 207-453-7125
 Fax: 207-453-2502
 info@jamesdjulia.com

Home
 About Us
 Absentee Bidding
 Appraisals
 Attractions
 Auction Process
 Catalog Archive
 Contact Us
 Master Catalog Search
 Online Registration
 Press Releases
 Shipment & Payment
 Shows & Pickups
 Terms & Conditions
 Why Consign?
 Upcoming Auctions
 Join Our Email List

Advertising, Toy & Doll Division

Advertising, Toy, & Doll Auction
Auction: Nov 30, 2011: 10am
Preview: Nov 29, 2011: 9am -5pm
Location: Julia Auction Facility
 Fairfield, Maine 04937

For approximately 40 years, the Julia firm has been known for handling some of the finest quality items, collections, and estates available. This will be a fantastic array of goods gathered from across the United States. Included will be fresh to the market, quality pieces

Lamp & Glass Division

Fall Lamp & Glass Auction
Auction: Dec. 1 & 2, 2011
Preview: Nov. 29 & 30, 2011

Our auction catalog is now online for your viewing. If you find you have questions please don't hesitate to contact either Dudley Browne or Julie Killam at lg@jamesdjulia.com.

Catalog: Session 1 | Session 2

Antique & Fine Art Division

**Consignments Wanted
 Next Sale: Winter 2012**

Consignments Wanted. This sale will include American & European Paintings, Furniture; Folk Art; Bronzes; Silver; Weathervanes; Oriental Rugs; Historical; Porcelain; and Orientalia. With the most competitive terms in the industry, we would be interested in talking with you.

© James D. Julia, Inc. • Contact Us • Privacy & Refund Policy

Abb. 2011-4/097
 http://jamesdjulia.com (2011-11)

SG

November 2011

Amerikanisches Pressglas & Millefiori-Paperweights ...

Gefunden von Gerd Mattes. Herzlichen Dank!



James D. Julia Inc.
<http://jamesdjulia.com> →
Fall Lamp & Glass Auction December 2011
Lots 2001-2594 & 3001-3406

SG: Ich habe nicht heraus bekommen, ob die Zahl in (500-800 ...) der Aufrufpreis ist. Wenn ja, dann sind das ganz schön happige Preise!

Neal: Pressed Glass Salt Dishes of the Lacy Period, 1825-1850, Logan W. & Dorothy B. Neal, 1962, 1st ed., S. AMAZON USA

← **2033 SIX PRESSED GLASS DISHES AND NAPPIE**

1) Emerald green flint glass 5-3/4" plate with a Gothic arch design around the rim and a sixteen square pattern on the base; every other square is decorated with a four petaled flower. 2) Light green flint glass 5-3/4" plate with a Gothic arch design around the outside and a sixteen square pattern on the base; every other square has a stippled pattern to it. 3) Cobalt blue flint glass 5-3/4" plate with fourteen circles around the rim of the plate and a central star surrounded by stippled half ovals in the base. 4) Emerald green flint glass 6-1/4" plate with a stylized bell flower type design around the rim and a pinwheel in the very center of the dish. 5) Cobalt blue flint glass 9" plate with a stylized foliate design around the edge and a similar design in the center of the plate. 6) Cobalt blue flint glass 5" nappie on footed base. Nappie has alternate stippled diamond and plain sections to the bowl. Base of foot has eight lobes. Bowl is connected to base with a wafer. PROVENANCE: From the **Collection of Dorothy-Lee Jones**. [...] 5-63109 (500-800)

2005 FOUR BLUE LACY GLASS SALTS

1) Neal DI-1 in sapphire. Neal does not list this salt in sapphire. Exceptional condition with minor flakes to the paw feet at one corner. 2) Neal DI-9 in cobalt blue; rated by Neal as very rare. 3) Neal MV-1B in cobalt blue; rated by Neal as very rare. There is a large chip off one foot. 4) Neal SD-16 in deep cobalt blue; rated by Neal as rare. SIZE: Ranges from 3" to 3-3/4" w. PROVENANCE: From the **Collection of Dorothy-Lee Jones**. [...] 5-63131 (1,000-1,400)



2003 FIVE SANDWICH GLASS SUGAR BOWLS →

1) Pressed acanthus leaf and shield sugar on foot in light blue opalescent. Sugar is undamaged, however there is no lid present. 2) Pressed Gothic arch sugar in clear. Sugar is undamaged, lid has minor chipping to its edge. 3) Pressed Gothic arch sugar in canary. Sugar is undamaged, lid has a 1/2" spall and other minor flakes around its rim. 4) Pressed Gothic arch sugar in opaque starch blue. Sugar is undamaged, however the lid has had polishing throughout its rim. 5) Pressed Gothic arch sugar in amethyst. Sugar is badly cracked, lid is heavily chipped and flaked around the rim. SIZE: Lidded sugars are 5-1/2" x 5" dia. PROVENANCE: From the **Collection of Dorothy-Lee Jones**. CONDITION: As noted. 5-63106 (1,200-1,400)

2008 FIVE LACY OPEN SALTS

1) Neal SD-9 in violet-blue; rated by Neal as rare. There is a noticeable chip on the top edge. 2) Neal JY-2 in light green; rated by Neal as rare. Exceptional condition. 3) Neal CT-1 in silvery-opaque white; rated by Neal as very rare. There is a chip to one corner of the base. 4) Neal OO-26 in dark amethyst; listed by Neal as extremely rare. Superb condition. 5) Another amethyst salt of the lacy period of undetermined pattern. SIZE: 2-3/4" to 3" w. PROVENANCE: From the **Collection of Dorothy-Lee Jones**. CONDITION: All salts are very good to excellent with the usual flakes. If there is more significant damage, it will be noted in the description. 5-63134 (800-1,200)



2009 FIVE CLEAR LACY GLASS OPEN SALTS

Includes five eagle pattern lacy salts by the Boston & Sandwich Glass Company. 1) Neal EE1. Front and back with a splayed eagle, each side having a willow tree. CONDITION: Very good showing minor flakes around rim. 2) Neal EE3. Showing a perched eagle on each corner and an American shield on the front and back. CONDITION: Very good with minor flakes on the rim and the feet. 3) Neal EE6. With a splayed eagle in the stippled base. CONDITION: Good with noticeable chipping around rim. 4 & 5) Each are Neal EE7. Splayed American eagle on front and back. Neal rates these two as rare. CONDITION: Each are very good to excellent with only the most minor of flaking to feet. SIZE: 2" t x 3" w, 2-1/4" x 3-1/4" w, 1-1/2" t x 3-3/4" w and two 2-1/4" t x 3-3/4" w respectively. PROVENANCE: From the [Collection of Dorothy-Lee Jones](#). CONDITION: As noted. 5-63147 (800-1,000)



2012 TWO LACY GLASS OPEN SALTS

Lot consists of two Neal MV-1 open salts. 1) Boston & Sandwich Glass example in very dark amber. 2) Mt. Vernon or Saratoga Glass example in black olive green. Neal rates both of these salts as very rare. Two exceptionally rare colors of this fine salt pattern. SIZE: Each are 2-13/16" t x 1-3/4" w. PROVENANCE: From the [Collection of Dorothy-Lee Jones](#). CONDITION: Both are very good to excellent. 5-63145 (700-900)



2019 TWO LACY GLASS OPEN SALTS

1) Neal OP-17 in opalescent dark blue; rated as very rare. 2) Neal CT-1 in opaque blue; rated as very rare. SIZE: Ranges from 3" to 3-1/2" w. PROVENANCE: From the [Collection of Dorothy-Lee Jones](#). CONDITION: 1) Is near mint and is far better than what is generally seen. 2) This salt has a wonderful luster and has one minor flake to one corner. An exceptional example. 5-63133 (600-800)



2018 TEN CLEAR LACY PERIOD SALTS

1) Neal OL-12; rated as rare. 2) Neal OP-1; rated as rare. 3) OP-2 type with an unlisted base design. 4) OO-1A. 5) OG-2; rated as rare. 6) BF-1B; rated as scarce. 7) CN-1; rated as very rare. 8) SC-3; rated as rare. 9) BF-1B; rated as scarce. 10) Another unlisted example. SIZE: Ranges from 3-1/4" to 3-3/4" w. PROVENANCE: From the [Collection of Dorothy-Lee Jones](#). CONDITION: All are very good to excellent. 5-63130 (600-900)



2041 LACY GLASS SALT

Neal HL-2 showing a bust of Washington on one side and medallion of Lafayette on the other. Neal rates this salt as extremely rare. This is a fine example with far less damage than is normally seen on these salts. SIZE: 1-7/8" t x 3" across. PROVENANCE: From the [Collection of Dorothy-Lee Jones](#). CONDITION: Very good to excellent with minor roughness to rim. 5-63132 (500-800)



2020 SIX NEW ENGLAND TYPE SALTS

1) Neal NE-1A in clear. Neal does not list this salt in clear. 2) Neal NE-4 in clear. 3) Neal NE-5 in light green; rated as scarce. 4) Neal BH-1 in clear; rated as very rare. 5) Neal JY-2 in clear; rated very rare. There is a 1" crack at one corner of this salt. 6) Neal PY-1 in dark brown; rated as extremely rare, appears to be made of sewer tile. Piece has a significant chip to one foot. SIZE: All are 3" wide. PROVENANCE: From the [Collection of Dorothy-Lee Jones](#). CONDITION: All are very good to excellent with the expected flakes. Salts with significant damage is noted so in their description. 5-63135 (600-900)



2021 SIX LACY SALTS

1) Neal HN-11; French lacy salt in medium amber; rated very rare. 2) Neal BS-2 in opalescent. Salt has a significant chip to the rim on one side. 3) Neal NE-6 in light green; rated rare. 4) Neal SN-1B in opaque clambroth; rated rare. 5) Neal SL-2A in medium amber; rated very rare. 6) Neal SL-1 in dark green; rated extremely rare. This salt has a large chip off one corner. SIZE: All are 3" wide. PROVENANCE: From the [Collection of Dorothy-Lee Jones](#). CONDITION: All salts are very good with expected flakes to the edge and feet. More significant damage is noted with individual salts. 5-63136 (600-800)



2067 FOUR PRESSED GLASS SALTS

1) Neal OP-4 in clear; rated scarce. 2-3) Neal OP-6 in red amber; each rated very rare. 4) Neal SN-1 in cobalt blue; rated scarce. SIZE: Tallest is 2-1/4". CONDITION: All are very good to excellent; #4 has a small chip to the corner of one foot. 5-63284 (300-500)



2065 TWO FRENCH LACY GLASS OPEN SALTS

Lot of two French dolphin salts. 1) Being of lacy period, pictured in [Neal](#) and designated [DN1](#). **Extremely rare**. CONDITION: Very good to excellent. 2) [Dolphin salt similar to Neal DN1, but of a later period](#). Glass is heavier, appears hand cut and has a polished base. CONDITION: Very good to excellent. SIZE: 2-3/4" t x 2-3/4" w. PROVENANCE: From the [Collection of Dorothy-Lee Jones](#). 5-63144 (300-500) SG: s. PK 2010-4, Vogt, „Salières Coquille m. à diamants et filets“ von Baccarat, um 1830/1831-1840



2095 **EARLY LABOR UNION PARADE BANNER** →

Fantastic early labor union parade banner reads "**Flint Glass Cutters Union No. 63 Meriden, CT A.F.G.W.U.**" on the front which also includes a fringed border shaded gold, orange and black lettering with clasped hands above against a beige colored background. Backside is printed in black "**Flint Glass Cutters Union No. 63 Meriden, CT**". Banner is accompanied by a photo of a Union float with a gentleman holding this banner. A note on the back of the photograph indicates "This is Flint Glass Cutters float, Meriden, CT **about 1910**". SIZE: Banner is 44" x 29". PROVENANCE: From the **Collection of Dorothy-Lee Jones**. CONDITION: Very good with some minor wear to the lettering and some minor water staining. Wooden rod is a replacement and grommets at the top of the banner are replaced. 5-63731 (2,000-4,000)

SG: AFGWU = American Flint Glass Workers Union, gegründet 1878

2074 **CUP PLATE MOLD & CERAMIC BOWL**

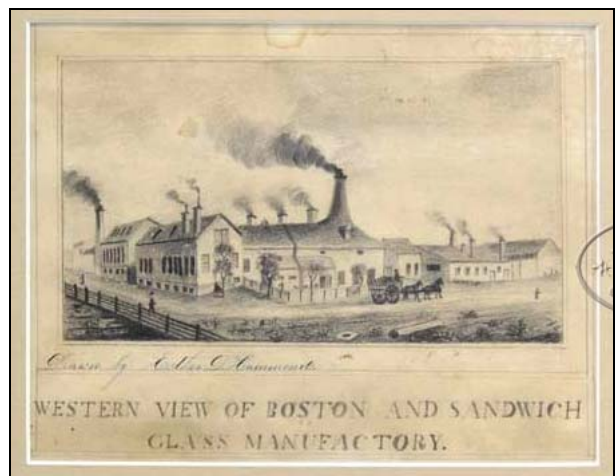
Mold is a two-part plaster of paris mold made from a Henry Clay cup plate. Molds like this were used to press ceramic copies of various cup plates and toddy plates. PROVENANCE: From the **Collection of Dorothy-Lee Jones**. [...] 5-63125 (100-200)

SG: Gipsmodell eines Tellers als Vorform einer Pressform, wahrscheinlich Boston & Sandwich Glass Co., um 1830 s. Lee 1948, Plate 91, Cup Plate No. 563, Henry Clay (1777-1852), Amerikan. Politiker aus Kentucky s.a. PK 2008-3, Vogt, Abb. 2008-3/057



2164 **THREE GLASS RELATED PRINTS & DRAWINGS**

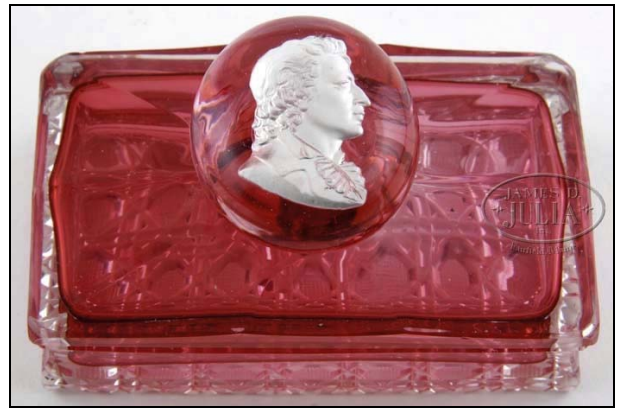
1) Hand drawn plot map for the survey of the land of Henry P. Binney and others in East Cambridge and Somerville, July 1867. There is a note on the frame stating that this map is in the area of the **New England Glass Company plant**. Housed in a contemporary frame and mat. 2) Print showing the **glass works at Wheeling, West Virginia and the glass works at Sandwich, Mass.** Print is marked "J.H. Bufford's Lith. 490 Washn. St., Boston. Print is housed in a black and gold period frame. 3) Drawing **Western View of Boston and Sandwich Glass Manufactory**. The drawing is signed "Drawn by Esther D. Hammond". Drawing is framed in a contemporary frame and mat. SIZE: Map: 23-1/2" x 33-1/2" overall. Print: 27" x 14-7/8" overall. Drawing: 12-1/4" x 11" overall. PROVENANCE: From the **Collection of Dorothy-Lee Jones**. CONDITION: Good with some tears and folds to map and some water stains to print and drawing. 5-63733 (200-400)



2528 ANTIQUE SULPHIDE LETTER PRESS →

Sulphide of a gentleman with a ruffled shirt and wavy hair on a translucent cranberry ground forms the handle of a hollow blown cranberry letter press. Underside is cut in a crosshatched button pattern. SIZE: 4-1/2" l x 2-3/4" w x 3" t. PROVENANCE: From the **Collection of Dorothy-Lee Jones**. CONDITION: There are multiple chips to two corners on the base. 5-63155 (400-600)

SG: Paste Friedrich von Schiller, Harrach, Böhmen, oder Josephinenhütte, Schlesien, um 1850
s.a. Becher "Schiller", Glasmuseum Passau



2431 TWO AMERICAN PRESSED GLASS PAPERWEIGHTS

1) **Mt. Washington antique clear paperweight** with a pressed dog's face in the base. 2) **Mt. Washington antique clear paperweight** with a pressed figure of a sleeping baby in the base. SIZE: 3-1/4" dia and 4-3/4" l respectively. CONDITION: Both are very good to excellent. 5-63648 (200-300)

SG: s. PK 2010-4, Vogt, Drei Briefbeschwerer: Katzen-, Kater- und Hundekopf, Baccarat 1885
s. PK 2007-2, Abb. 073, Vogt, Presse-papier mit einer Putte
s. MB Baccarat 1885, Planche 369, No. 4865A & 4865B



2555 THREE SULFIDE GLASS TUMBLERS

1) Sulphide glass tumbler of **Napoleon I**. 2) Sulphide tumbler of an unknown character. 3) Sulphide glass tumbler of **Duc de Bordeaux**. SIZE: All are 3-3/4" t. PROVENANCE: From the **Collection of Dorothy-Lee Jones**. [...] 5-63095 (300-500)

SG: Baccarat / St. Louis, um 1830, Pressformen der Becher 1 & 2: erstmals Cristallerie de Vonêche, Belgien, um 1825, Mitte Paste eines / einer Heiligen, s. PK 2009-4, Cameo-incrusted Glass Plaques - Glasplaketten mit inkrustierten Pasten



2451 TWO SULPHIDES

1) French antique wall plaque with a sulphide of a kneeling angel in the middle. Back of plaque is starburst cut. Possibly **Baccarat or St. Louis**. 2) Sulphide of a gentleman. SIZE: 3-1/2" x 2-1/2" w and 2" t x 1-5/8" w respectively. CONDITION: Both are very good to excellent. 5-63651 (400-600)

SG: Plakette rechts Martin Luther, Harrach, Böhmen, oder Josephinenhütte, Schlesien, um 1850
s.a. Becher "Goethe", Glasmuseum Passau
s. PK 2009-4, Cameo-incrusted Glass Plaques - Glasplaketten mit inkrustierten Pasten



2419 MILLEFIORI PAPERWEIGHT SHADOW BOX

Millefiori canes of various artists including Jim Donofrio, Peter McDougall, Drew Ebelhare, Jim Hart, John Deacons, Karen & Rich Federici, Heron Glass, Beth Cox/Chuck Pritchard, Jim Brown, Mike Hunter and Murano. This was compiled by Andy Dohan for the Wheaton Village Paperweight Festival May 2006 silent auction. SIZE: 21" x 21". PROVENANCE: Barry Schultheiss Collection. CONDITION: Very good to excellent. 5-63562 (300-500)



2080 TWO VICTORIAN STORK VASES

1) Joseph Locke pressed amberina stork vase shading from a fuchsia to an amber. 2) Identical vase to the first but in clear frosted glass. Both vases are unsigned. SIZE: Each are 4-1/2" t. CONDITION: Very good to excellent with the amberina vase having firing lines at three of the four corners at the top. 5-63273, 5-63274 (600-800)



2066 NINE PRESSED GLASS ITEMS. Lot consists of five pressed glass shots/toy tumblers in electric blue, milk glass, clear, amethyst and forest green. A princess feather amethyst nappie. A 4" clear pressed nappie. A 3-1/2" clear pressed nappie and a cup plate with very slight opalescence. SIZE: Toy tumbler is 1-3/4" t. CONDITION: Very good to excellent. 5-63282 (300-500)

SG: blauer / amethyst-farbener Teller unten mitte Baccarat? / St Louis?, Val St. Lambert?, um 1830? (nicht MB LH um 1830!)



2034 **SIX LACY GLASS ITEMS.** 1) 9" bowl with acanthus leaf and star design. 2) 7-1/2" peacock feather with rayed center. 3) 9-1/2" ovoid peacock feather dish with diamond square center. 4) 12" deep dish with stippled circle design around the rim and a diamond square cross center. 5) 5-1/4" sugar bowl with thistle and pineapple design (no lid present). 6) 7-1/2" footed bowl with various rosette design. PROVENANCE: From the [Collection of Dorothy-Lee Jones](#). [...] 5-63110 (500-700)



2043 **TWO SANDWICH GLASS CUP PLATES.** 1) [Lee #247](#) in deep blue-green. Lee rates this as very rare. 2) [Lee #246](#) in opal. Lee rates this plate as unique. SIZE: Both are 3-7/16" dia. PROVENANCE: From the [Collection of Dorothy-Lee Jones](#). [...] Two very difficult plates to find. 5-63151 (500-700)



2062 **THREE COLORED CUP PLATES OF THE HISTORICAL GROUP.** 1) [Neal #594](#). Harrison campaign cup plate in amber. 2) [Neal #662](#). Eagle cup plate dated 1832 in opal. Rated by Neal as very rare. 3) [Neal #677-A](#). Eagle cup plate in cobalt blue. Rated by Neal as rare. SIZE: 1) 3-1/4" dia. 2) 3-1/2" dia. 3) 3-3/16" dia. PROVENANCE: From the [Collection of Dorothy-Lee Jones](#). [...] 5-63148 (400-600)



2053 **NINE PRESSED GLASS ARTICLES.** 1) 6" amethyst flint glass bowl. 2) 8" brilliant green dish of low resonance with a foliation and pinwheel design. 3) 5" cobalt blue flint glass bowl of alternating stippled diamond and panel design. 4) 7" cobalt blue flint bowl. 5) 5" cobalt blue pressed glass French footed tumbler. 6) 4-3/4" cobalt blue pressed glass footed goblet. 7) 5" clear pressed and molded French small compote. Bowl is molded with a floral and Gothic arch design. Base has flowers molded into a lined field. 8) 5-3/4" covered bowl in light opalescent of low resonance. Bowl and lid are molded throughout with a shell motif of various types. Feet of bowl are fully formed dolphins. Knop on the lid is a large shell. 9) 5" light blue small bowl issued on "10 March 1888" to celebrate the silver wedding anniversary of the **Prince and Princess of Wales**. **PROVENANCE:** From the **Collection of Dorothy-Lee Jones**. **CONDITION:** Generally very good with only minor flaws on a few of the pieces. 5-63108 (400-600)

SG: Dose mit Muscheln, oben rechts, Vallérysthal, um 1900, Fußschale oben mitte: form-geblasenes Glas, Böhmen / Mähren / Steiermark, um 1850, Fußbecher unten links: form-geblasenes Glas, Steiermark, um 1850, Fußbecher unten rechts: form-geblasenes Glas, Hersteller unbekannt, Frankreich / Steiermark, um 1850



Siehe unter anderem auch:

WEB PK - in allen Web-Artikeln gibt es umfangreiche Hinweise auf weitere Artikel zum Thema:
suchen auf www.pressglas-korrespondenz.de mit **GOOGLE Lokal** →

www.pressglas-korrespondenz.de/aktuelles/pdf/pk-2008-3w-vogt-teller-sandwich.pdf

www.pressglas-korrespondenz.de/aktuelles/pdf/pk-2009-4w-mckeeon-barton-plaques-sulphides.pdf

www.pressglas-korrespondenz.de/aktuelles/pdf/pk-2010-4w-vogt-salz-delfin-bacc-1830.pdf

www.pressglas-korrespondenz.de/aktuelles/pdf/pk-2010-4w-vogt-briefbeschwerer-bacc-1885.pdf